

### CBG (Lot: 2)



#### South Tip, LLC

21400 SW 392nd Street  
Florida City, FL 33034  
License Number: 12\_4e31b9d8

#### Order ID#: 20210224-642

Lab Code#: LC-20210224-1543  
Product Type: Hemp Flower  
Lot designation: 2  
# of clippings: 4  
Initial Weight (g): 42.61

Planting date: 15-Dec-2020  
Sample date: 22-Feb-2021  
Sample received: 24-Feb-2021  
Completed: 26-Feb-2021  
Report expires: 26-Feb-2022

### CANNABINOIDS

**Analysis Batch:** WO-21022407  
**Analysis Date:** Thursday, February 25, 2021

**Test Method:** SOP 6.6  
**Instrument:** Agilent HPLC, Instrument 33

Analyte	% <sup>a</sup>	mg/g	MU Range (%)
THCA-A	0.0577	0.5767	0.007 - 0.109
Δ9-THC	0.0714	0.7135	0.025 - 0.117
CBDA	ND	ND	ND
CBD	ND	ND	ND
CBN	ND	ND	ND
CBDV	ND	ND	ND
Δ8-THC	ND	ND	ND
THCV	ND	ND	ND
CBG	1.75	17.50	1.696 - 1.804
CBGA	4.25	42.55	4.176 - 4.334
CBC	0.206	2.060	0.128 - 0.284
<b>Total:</b>	<b>6.34</b>	<b>63.40</b>	

<sup>a</sup> Detection Level = 0.03% by dry-weight.

<sup>b</sup> THC is calculated as %THC + (%THCA × 0.877). MU<sub>THC</sub> = ±0.046%

<sup>c</sup> CBD is calculated as %CBD + (%CBDA × 0.877).

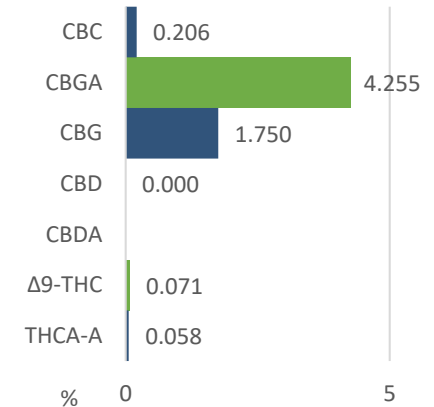
<sup>d</sup> The absolute sum of all cannabinoids above the level of detection.

**Total THC<sup>b</sup>**  
**0.122%**  
**PASS**

**Total CBD<sup>c</sup>**  
**0%**

**TOTAL<sup>d</sup>**  
**6.34%**

#### Potency Profile



**MOISTURE**  
**4.03%**

Test Method: SOP 6.6  
Instrument: E15  
Analysis Date: 25-Feb-2021



#### Comments:

None.

#### Authorization

Steven Perez, Laboratory Director  
Approval Date: 26-Feb-2021



Test results are based solely upon the test article submitted to Americanna Laboratories, LLC in the condition it was received. Americanna Laboratories, LLC warrants that all analytical work was conducted in a professional manner in accordance with the requirements of ISO/IEC 17025:2017, such as comparison to Certified Reference Materials and NIST traceable Reference Standards. This report shall not be reproduced, except in its entirety, without the written approval of Americanna Laboratories, LLC. Test results are confidential unless explicitly waived. Void after 1 year from test end date.

ND=Not Detected, NT=Not Tested, ppm=Parts Per Million, ppb=Parts Per Billion, MU=Measurement Uncertainty. Limit of Detection (LOD) and Limit of Quantitation (LOQ) are terms used to describe the smallest concentration that can be reliably measured by an analytical procedure.

**CBG (Lot: 2)**

- end of report -